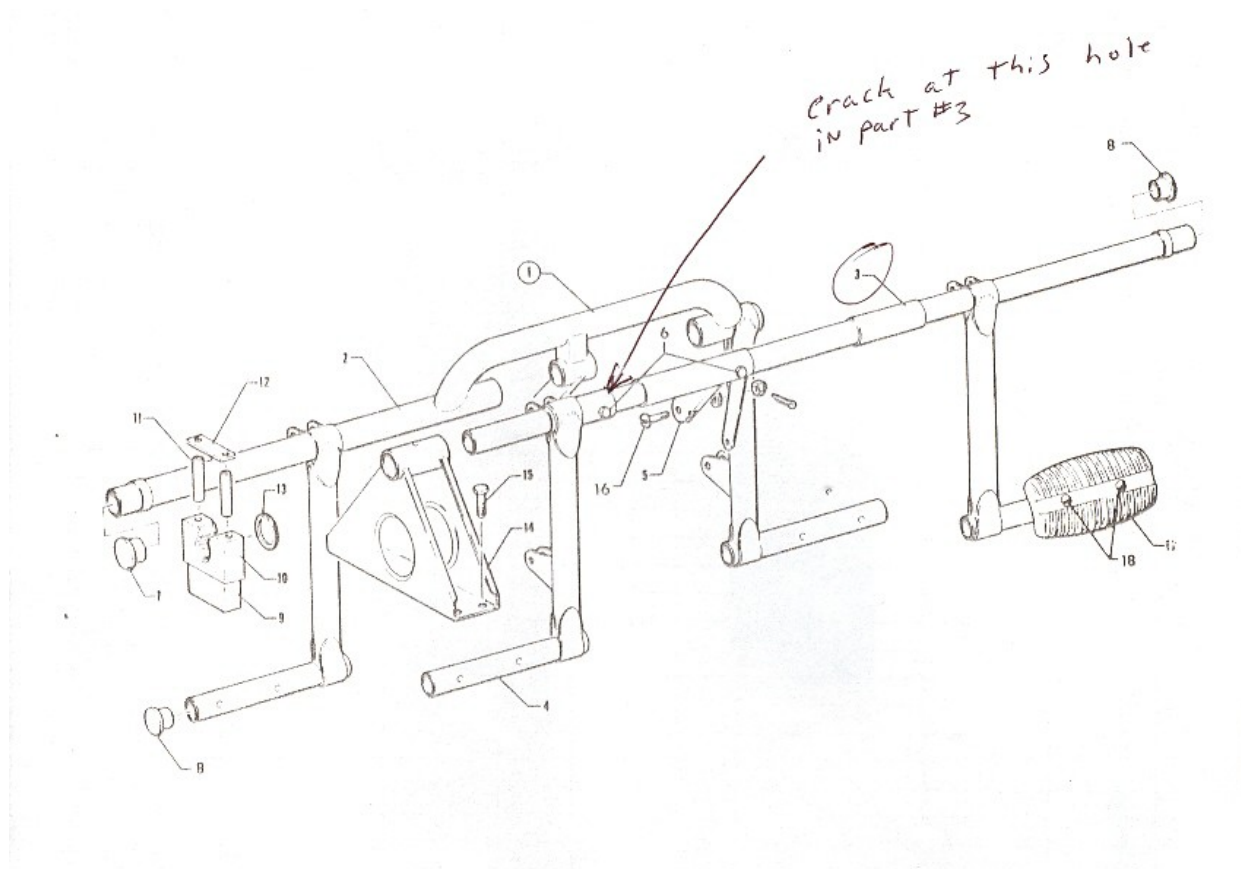


## Piper PA32-300, Cracked Rudder Bar, ATA 2720

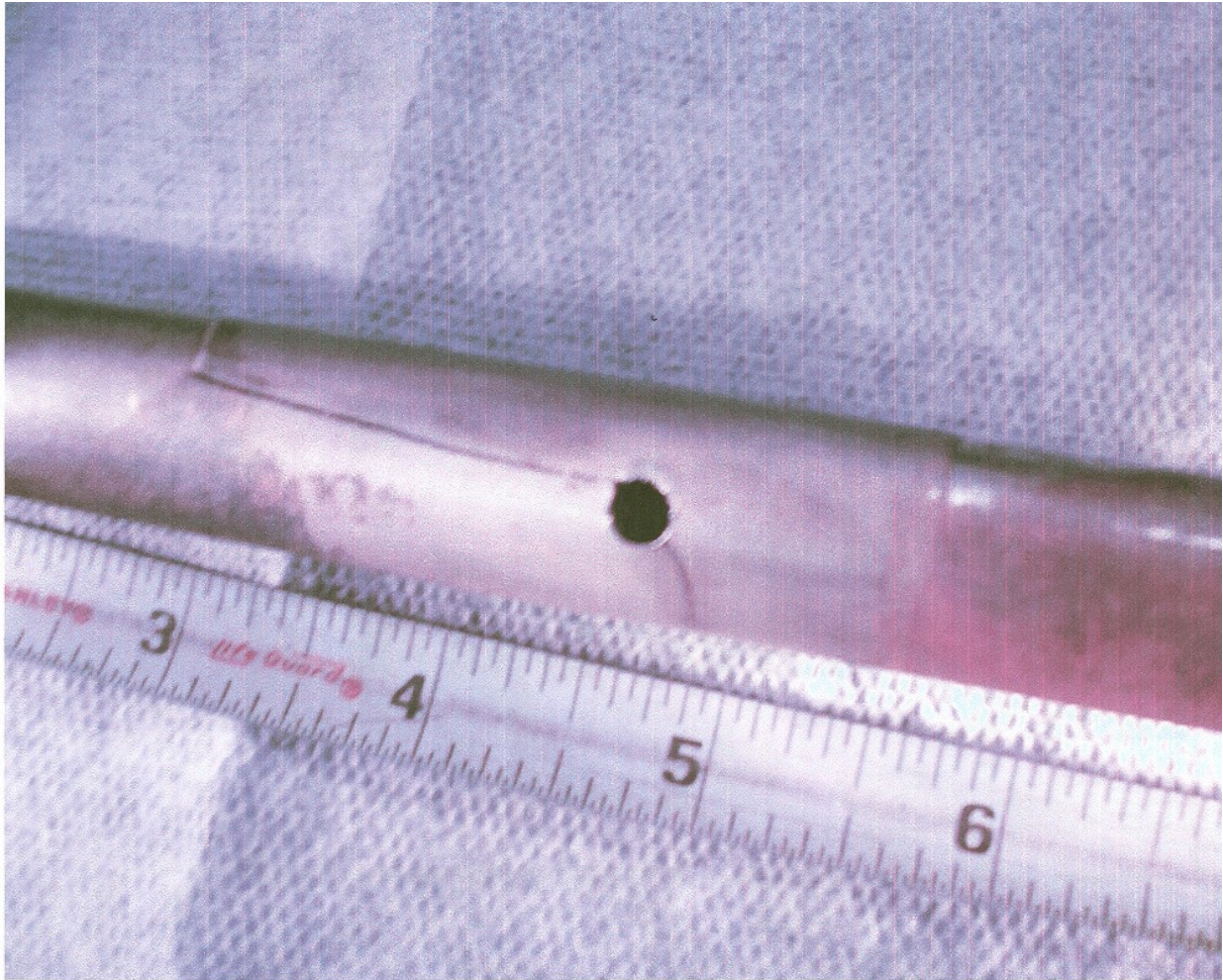
A technician for a commuter service states, "Upon removal and disassembly of the rudder pedal assembly (P/N 63419-02), a crack was found approximately two inches long, extending out from the center bolt through-hole.

The Technician found two other assemblies cracked in the same area. These cracks might be caused by a steering pressures applied while turning on the ground. All of these effected aircraft had more than 10,000 hours total time. Other aircraft inspected (for example, the Cherokee 6) also had elongated bolt holes.

This part can be inspected only by removing it from the aircraft, which is a time-consuming endeavor. The technician suggested arbitrary replacement of this part at or about 10,000 hours.



**Piper PA32-300, Cracked Rudder Bar, ATA 2720**



Part Total Time: 17,018.3 hours.